

Miter Saw Safety

Model DWS 779

Safety Instructions

- This miter saw is intended to cut only wood or wood-like products.
- Due to space restrictions, maximum length of wood for processing is 12'.
- Be mindful of others working in the shop area and keep walkways clear as much as possible.
- Long sleeves, jewelry and loose clothing should not be worn when operating this saw.
- Use clamps to support the workpiece whenever possible.
- Always keep your hand at least 4" (100 mm) from either side of the saw blade.
- Do not use this saw to cut pieces that are too small to be securely clamped or held by hand.
- The workpiece must be stationary and clamped or held against both the fence and the table.
- Do not feed the workpiece into the blade or cut "freehand" in any way.
- Push the saw through the workpiece. Do not pull the saw through the workpiece. To make a cut, raise the saw head and pull it out over the workpiece without cutting, start the motor, press the saw head down and push the saw through the workpiece.
- Never cross your hand over the intended line of cutting either in front or behind the saw blade.
- Do not reach behind the fence with either hand closer than 4" (100 mm) from either side of the saw blade, to remove wood scraps, or for any other reason while the blade is spinning.
- Do not use the saw until the table is clear of all tools, wood scraps, etc., except for the workpiece.
- Cut only one workpiece at a time. Do not cut stacked workpieces.
- Plan your work. Every time you change the bevel or miter angle setting, make sure the fence will not interfere with the blade or the guarding system.
- Provide adequate support such as table extensions, saw horses, etc. for a workpiece that is wider or longer than the table top.
- Do not use another person as a substitute for a table extension or as additional support.
- The cut-off piece must not be jammed or pressed by any means against the spinning saw blade.
- Always use a clamp or a fixture designed to properly support round material such as rods or tubing.
- Let the blade reach full speed before contacting the workpiece.
- If the workpiece or blade becomes jammed, turn the miter saw off. Wait for all moving parts to stop and disconnect the plug from the power. Then work to free the jammed material.

- After finishing the cut, release the switch, hold the saw head down and wait for the blade to stop before removing the cut-off piece.
- Hold the handle firmly when making an incomplete cut or when releasing the switch before the saw head is completely in the down position
- Ask for assistance from Pitsco Idea Shop Shop personnel if you are not thoroughly familiar with the operation of this machine. Knowledge is safety.
- Never lock the switch in the “on” position.
- Always wear safety glasses or goggles that are ANSI Z87.1 compliant.
- Use face or dust mask if cutting operation is dusty.
- Use hearing protection for prolonged saw use.
- Do not cut previously painted or chemically treated wood.

TECHNICAL DATA

Specifications DWS 779

Capacity of cut:

- 50° miter left and 60° miter right
- 49° bevel left and right
- 0° miter
 - Max. Height 4.4" (112 mm) - Resulting Width 9.1" (231 mm)
 - Max. Width 13.75" (349 mm) - Resulting Height 3.0" (76 mm)
- 45° miter
 - Max. Height 4.4" (112 mm) - Resulting Width 5.8" (147 mm)
 - Max. Width 9.6" (244 mm) - Resulting Height 3.0" (76 mm)
- 45° bevel - Left
 - Max. Height 3.1" (79 mm) - Resulting Width 11.4" (290 mm)
 - Max. Width 13.75" (349 mm) - Resulting Height 1.7" (43 mm)
- 45° bevel - Right
 - Max. Width 2.2" (56 mm) - Resulting Height 11.4" (290 mm)
 - Max. Height 13.75" (349 mm) - Resulting Width 1.1" (28 mm)
- Capable of cutting baseboard moldings 0.75" (19 mm) thick by 6.5" (165 mm) tall on a 45° right or left miter.

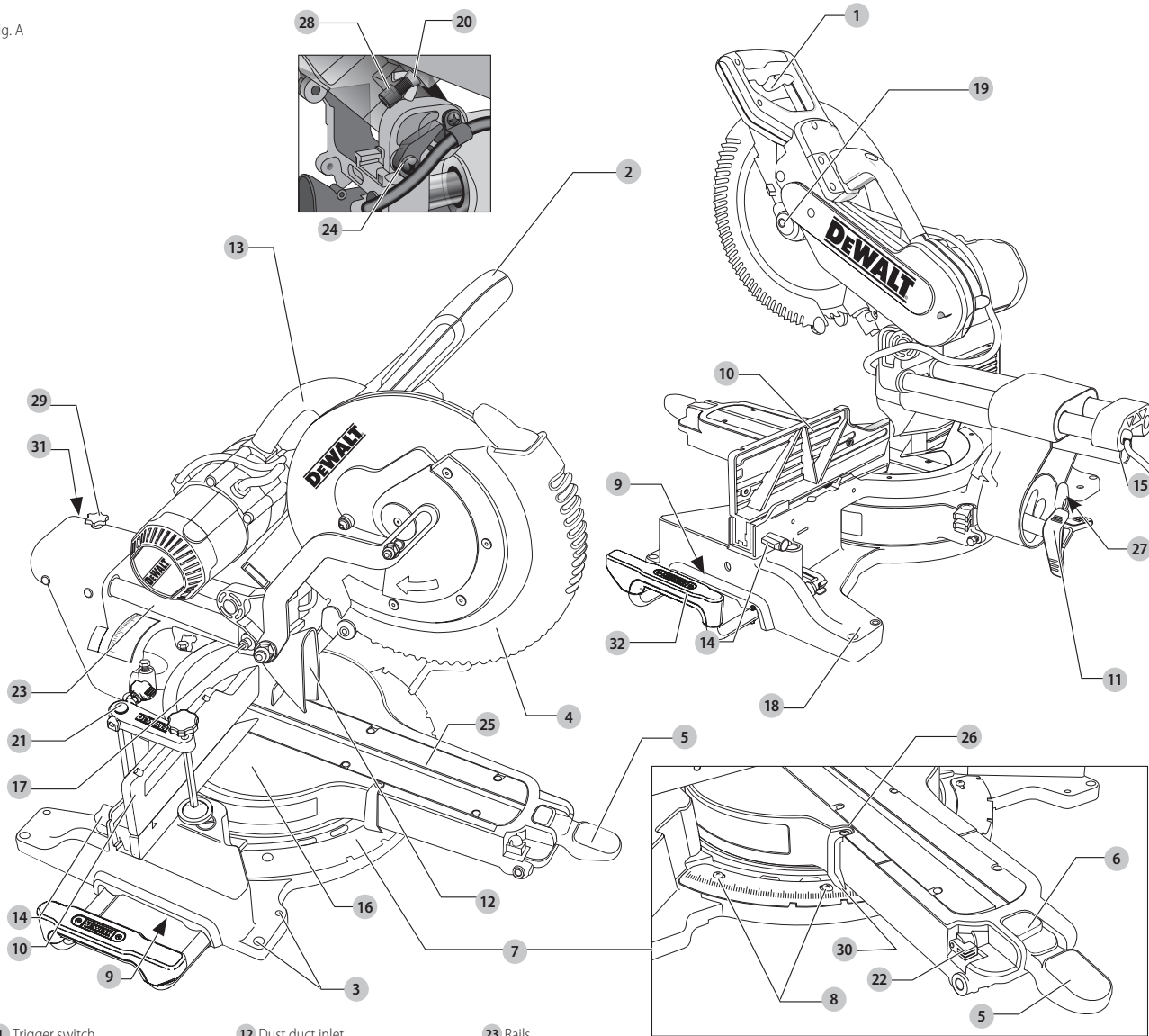
Drive

- 120 Volt motor
- 15 Amp motor
- 3800 RPM
- Cut helical gears
- Multi-V belt
- Carbide tooth blade
- Automatic electric brake

[User Manual](#) (pdf)

DeWalt Miter Saw Call Outs:

Fig. A



- | | | |
|----------------------|----------------------------|------------------------------|
| 1 Trigger switch | 12 Dust duct inlet | 23 Rails |
| 2 Operating handle | 13 Lifting handle | 24 Depth stop |
| 3 Mounting holes | 14 Fence adjustment knob | 25 Kerf plate |
| 4 Lower guard | 15 Dust port | 26 Miter pointer screw |
| 5 Miter lock handle | 16 Table | 27 0° bevel stop |
| 6 Miter latch button | 17 Lock down pin | 28 Depth adjustment screw |
| 7 Miter scale | 18 Base | 29 Rail lock knob |
| 8 Miter scale screws | 19 Spindle lock button | 30 Miter pointer |
| 9 Hand indentations | 20 Wing nut | 31 Rail set screw adjustment |
| 10 Fence | 21 Vertical material clamp | 32 Extension |
| 11 Bevel lock knob | 22 Miter latch override | |

⚠ WARNING! Read all safety warnings and all instructions. Failure to follow the warnings and instructions may result in electric shock, fire and/or serious injury.

📖 WARNING: To reduce the risk of injury, read the instruction manual.

If you have any questions or comments about this or any DeWALT tool, call us toll free at: 1-800-4-DeWALT (1-800-433-9258).